

AWWA C-502 DRY BARREL  
250 PSI WORKING PRESSURE  
500 PSI TEST PRESSURE

# UNITED FIREFLO MODEL F-06

Parts List

ANSI/AWWA STANDARD

Manufactured By United Water Products



## MATERIAL LIST

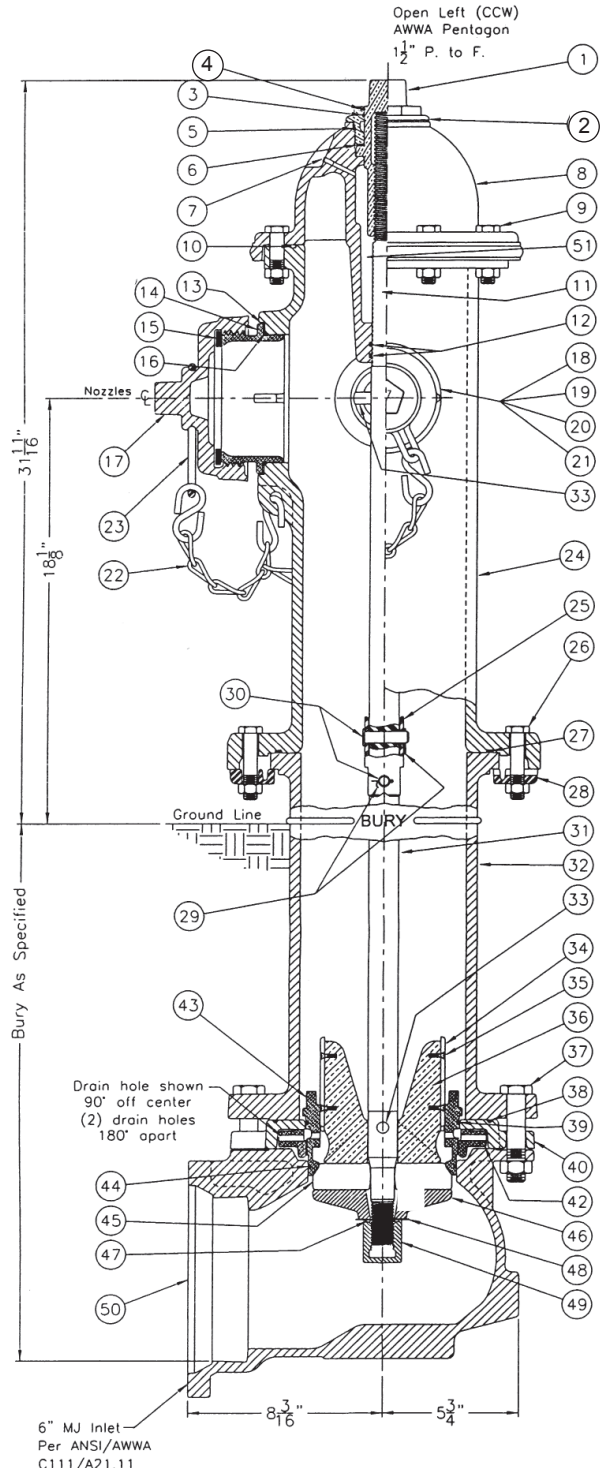
Item No.	Description	Material	Specification	Qty. Req'd
1	Operating Nut	Bronze	ASTM B584	1
2	Hold Down Nut	Bronze	ASTM B584	1
3	Hold Down Nut O-Ring	Rubber	ASTM D2000, BUNA N	1
4	Weather Seal	Rubber	ASTM D2000, BUNA N	1
5	Bonnet O-Ring	Rubber	ASTM D2000, BUNA N	1
6	Anti-Friction Washer	Celcon	-	1
7	Oil Plug	Bronze	ASTM B16	1
8	Bonnet	Cast Iron	ASTM A126, CL-B	1
9	Bonnet Bolts & Nuts	Steel	ZPS, A307	8
10	Bonnet O-Ring	Rubber	ASTM D2000, BUNA N	1
11	Upper Rod	Steel	ASTM A576, Gr-B	1
12	Upper Rod O-Ring	Rubber	ASTM D2000, BUNA N	2
13	Nozzle Lock Key	Str. Stil.	ASTM A276	6
14	Pumper Nozzle	Bronze	ASTM B584	1
15	Pumper Nozzle Gasket	Rubber	ASTM D2000, BUNA N	1
16	Pumper Nozzle O-Ring	Rubber	ASTM D2000, BUNA N	1
17	Pumper Nozzle Cap	Cast Iron	ASTM A126, CL-B	1
18	Hose Nozzle	Bronze	ASTM B584	2
19	Hose Nozzle Gasket	Rubber	ASTM D2000, BUNA N	2
20	Hose Nozzle O-Ring	Rubber	ASTM D2000, BUNA N	2
21	Hose Nozzle Cap	Cast Iron	ASTM A126, CL-B	2
22	Cap Chain	Steel	Plated	3
23	Chain Ring	Steel	Plated	3
24	Standpipe Upper	Ductile Iron	ASTM A536	1
25	Safety Coupling	Str. Stil.	ASTM A890	1
26	Safety Flange Bolts & Nuts	Steel	ZPS, A307	8
27	Safety Flange O-Ring	Rubber	ASTM D2000, BUNA N	1
28	Safety Flange	Cast Iron	ASTM A126, CL-B	2
29	Cotter Pin	Str. Stil.	ASTM A276	2
30	Clevis Pin	Str. Stil.	ASTM A276	2
31	Lower Rod	Steel	ASTM A576 Gr-B	1
32	Standpipe Lower (Specify Bury)	Ductile Iron	ASTM A536	1
33	Stem Pin	Str. Stil.	ASTM A276	2
34	Drain Valve Facing	HDPE	-	2
35	Drain Valve Screw	Str. Stil.	ASTM A276	4
36	Valve Top Plate	Bronze	ASTM B584	1
37	Elbow & D.R.H. Bolts & Nuts	Str. Stil.	SS304	6
38	Drain Ring Housing O-Ring	Rubber	ASTM D2000, BUNA N	1
39	Seat Ring O-Ring (Top)	Rubber	ASTM D2000, BUNA N	1
40	Drain Ring Housing	Ductile Iron	ASTM A536	1
42	Drain Ring	Bronze	ASTM B584	1
43	Seat Ring	Bronze	ASTM B584	1
44	Seat Ring O-Ring (Bottom)	Rubber	ASTM D2000, BUNA N	1
45	Main Valve	Rubber	ASTM D2000, BUNA N	1
46	Valve Bottom Plate	Ductile Iron	ASTM A536	1
47	Cap Nut Seal	Rubber	ASTM D2000, BUNA N	1
48	Lock Washer	Str. Stil.	ASTM A276	1
49	Valve Bottom Plate Nut	Ductile Iron	ASTM A536	1
50	Elbow	Ductile Iron	ASTM A536	1
51	Lubricant (in Chamber)	Mineral Oil	Food Grade	1

**Notes:**

- Part #'s 40, 46, 49 & 50 are Fusion Bonded Epoxy, inside and out, complying with AWWA C550.
- Pentagon measures 1-1/2" from point to flat at the base of the nut and 1-7/16" at the top; the height of the nut is to be 1" minimum.
- Pumper Outlet - Qty: 1 - Nominal size 4-1/2" with 4.5-4 NH threading per NFPA 1963.
- Hose Outlets - Qty: 2 pcs - Nominal size 2-1/2" with 2.5-7.5 NH threading per NFPA 1963.

- OPEN LEFT
- OPEN RIGHT

**OPTIONAL:**  
Flange Boot  
Drilled to ANSI 125  
or PN10/PN16



Design and materials are subject to change without notice.



UWP0515